

平板材料折弯模具
Plate material bending mold

铝型材折弯模具
Aluminum profiles bending mold



杭州泰谱圣机械有限公司
HANGZHOU TAIPUSHENG TECHNOLOGY CO., LTD.

中国浙江杭州市萧山区亚大路湖东村（右岩纺织厂内）
Yatai Road, Xiaoshan District, Hangzhou, China.
E xsfd@vip.126.com
S www.ips2008.com



经销商名片处

折弯模具快换系统/Bending tool quick-change system:

为了适应不同板材的高品质折弯要求，TPS公司研发的折弯模具快换系统，可在平板材料与铝型材材料之间自主快速更换，彻底解决多类型材料不能在同一台设备上无损精准折弯的行业难题。

In order to high quality bending for different materials, TPS company research and developed bending tool quick-change system, realize independent quick change between plate metal material and aluminium profiles, completely solve the industry problem of multi-type material can't be bended no damage accurately by the same equipment.

多刀杆折弯系统/More tool rod bending system:

在伸缩式双弯刀折弯系统的基础上，增加一组专业折铝型材的折弯刀杆，可实现平板材料及铝型材材料加工过程中的自由切换，大幅提高折弯成型度。
In telescopic double machetes bending system, on the basis of increase a group of professional folding aluminum bending tool rod, can realize shape material and switch freely in the process of aluminum material processing, bending forming degree will be greatly increased.

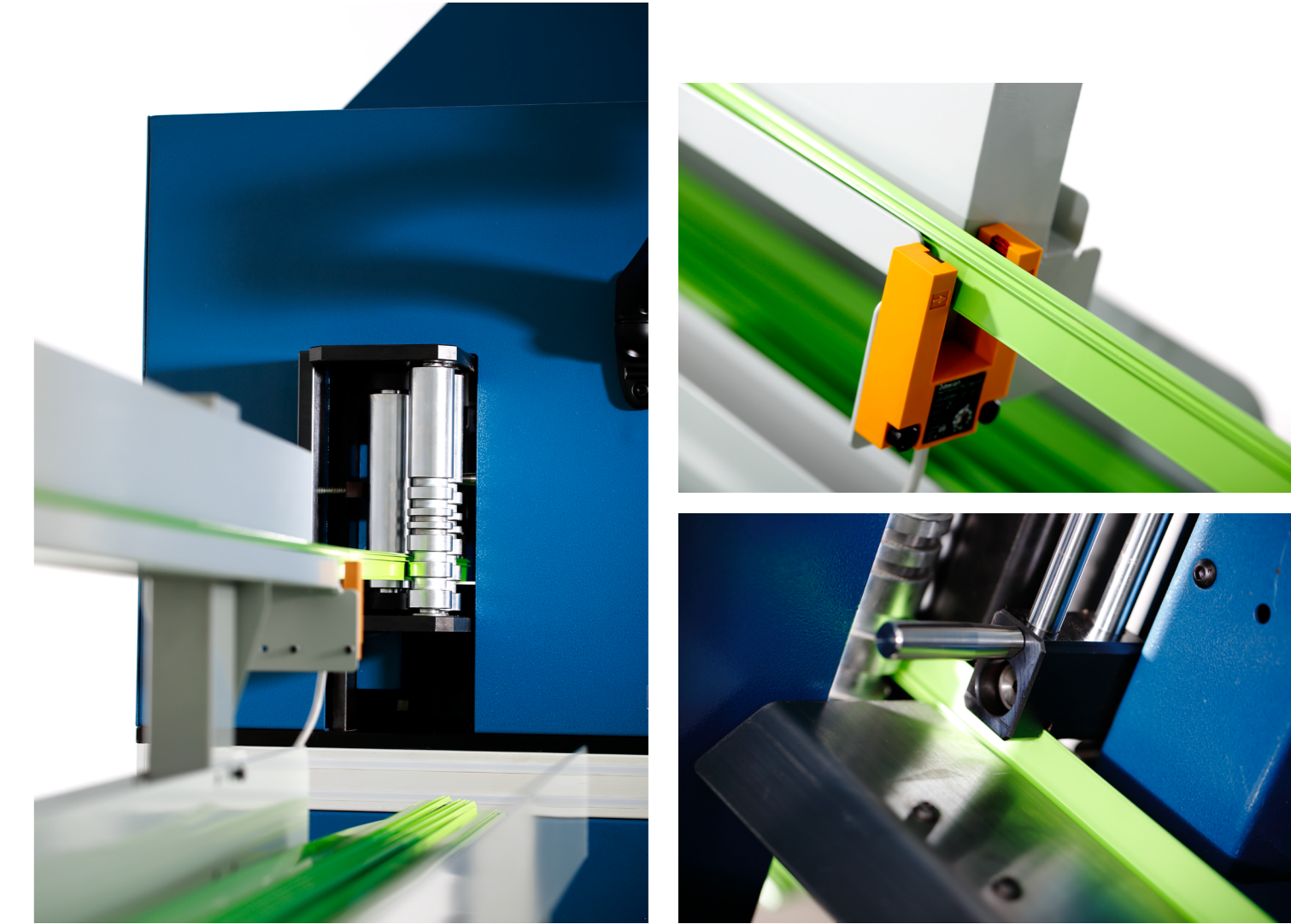
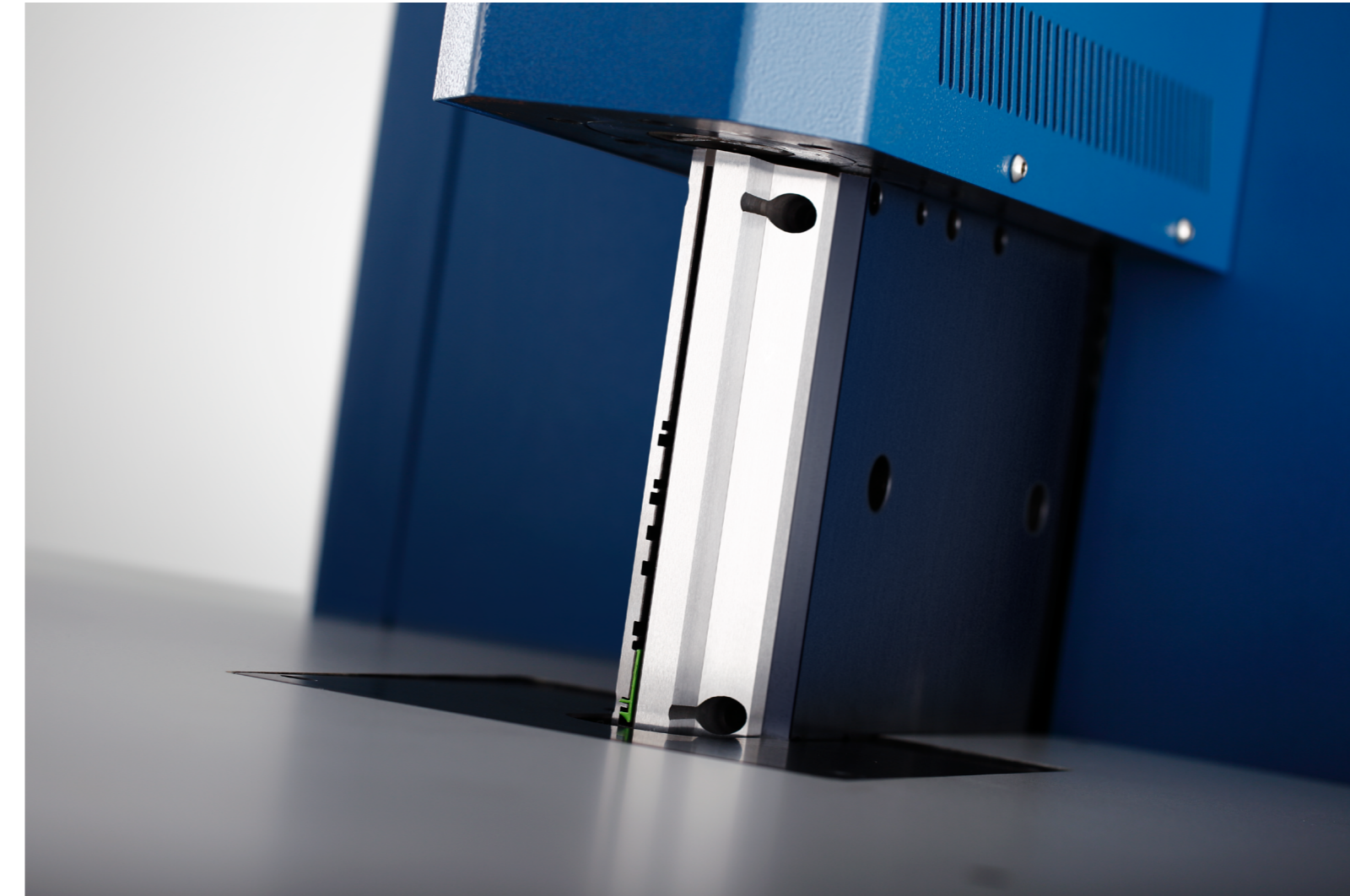
The Manufacture For Advanced Automatic Sign Bending
Machines And Sign Consumables

Technology, Profession and Service



S9710

Super Multi-functional Automatic Channel Letter Bending Machine

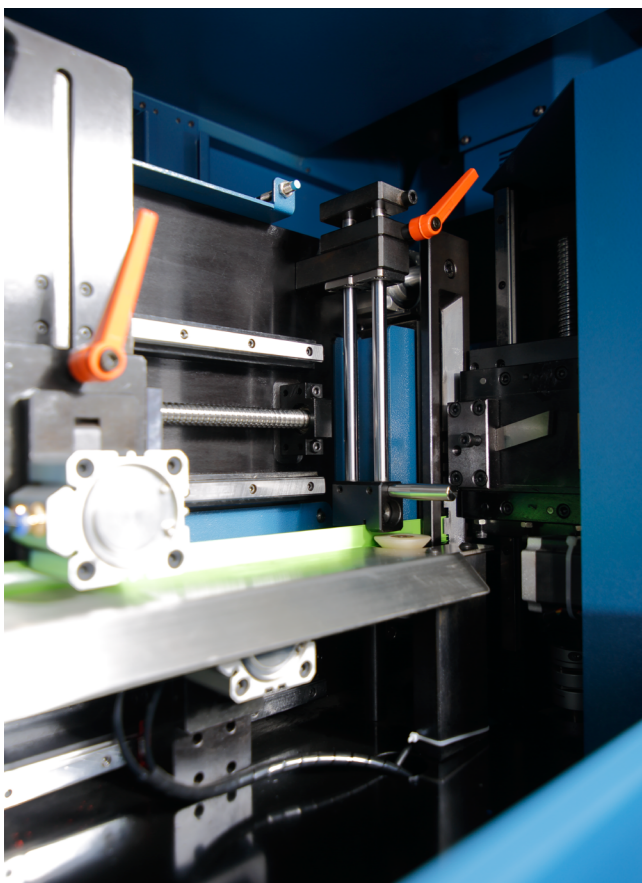


矫直机构:

前置送料校平机构与多层超长导料架配合使用，消除了拱料现象，确保送料过程更加顺畅。
Front feeding straightening mechanism straightening curved materials in advance for users in the process of material handling or use the reel material lead to nature bending deformation, to ensure that unstraight materials won't be stuck during processing.

全球首创多刀杆折弯系统及模具快换系统对材料进行精密折弯，真正实现集多种材料
高效精确折弯于一体的全能型超级弯字机。

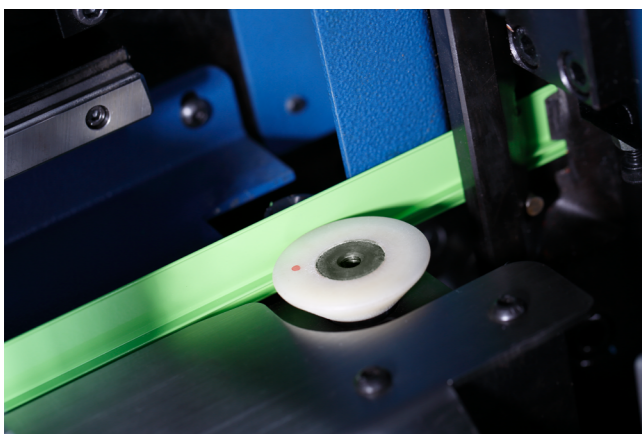
Global initiative more tool rod bending system and mold quick change system
bend materials accurately, really realize collecting high precision, efficient bending
for a variety of materials in one of the multi-functions super bending machine.



V型工业级刨槽方式 / V-shaped slotting mode

智能控制开槽深度，自由设定开槽总深、单次开槽深度及开槽次数；采用伺服电机控制，高精度伺服驱动，具有转速快、精度高、扭矩大的优点；V槽切面光滑、无毛刺、深度一致、折角时R角不明显，轮廓清晰美观。

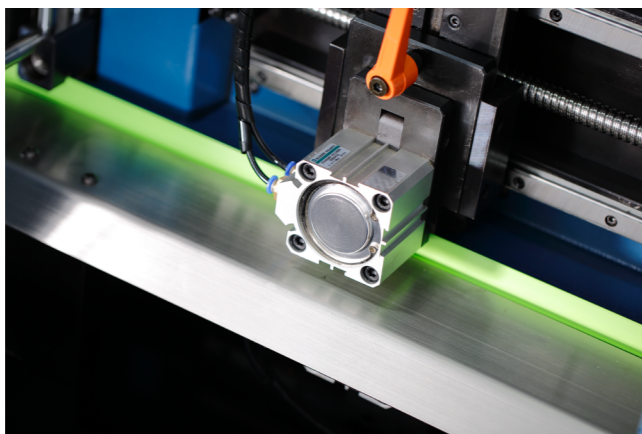
Intelligent control slot depth, free setting total slot depth, single slot depth and slot numbers; Servo motor control, high precision nut driver, with the advantages of slot speed, high accuracy and constant torque; V slotting surface is smooth, without any burr. Depth is consistent. The R Angle is not obvious when angle bending. Ensuring letters with clear and beautiful outline.



闭环控制/Closed-loop control:

配合独有的全闭环检测，实时监控材料的实际位移距离、折弯微量拉伸，实现图形轮廓长度的闭环控制，达到围边与面板的精确匹配。

Using alternating clamp feeding way with the unique full closed-loop detection, real-time compensate for length deviations such as the slippage of the detected materials, tensile during bending material, to effectively avoid problems of the inaccurate letter length, or not accurate matching with panel letter.



送料机构/Alternating clamping feeding mechanism:

交替式夹持送料机构采用伺服控制、双丝杠螺母驱动，具有大力矩、高精度、高速度传动性能，确保实际送料精度达到±0.1mm，杜绝了辊压式送料的物理打滑现象及压痕现象。

Slide rail type pressure device and the plate guide chute, to avoid the phenomenon of arch material and ensure smooth feeding process. Alternating clamping feeding mechanism includes servo motor controlling and double screw nut driver, with large torque, which has high precision and high speed transmission performance to ensure actual feeding accuracy to ±0.1mm and to eliminate physical skid phenomenon due to the roller pressure feeding.



大功率高刚性切角机构

High Power V-Cutting Angle Institutions

大功率直流电机驱动，具有噪音小、转速高、加工切面光滑等特点。
High power dc motor driver is with low noise, high speed and processing edge smoothing, etc.

S9710 超级弯字机

Super Multi-functional Automatic Channel Letter Bending Machine

设备简介/Brief Instruction:

S9710通过全球首创多刀杆折弯系统及模具快换系统对材料进行精密折弯，真正实现集铝型材、不锈钢、镀锌板、等各种材料高效精确折弯于一体的全能型超级弯字机。是高档LED字、铝型材勾边字、不锈钢字、冲孔字、树脂字等字壳制作的首选高端设备。

Global initiative more tool rod bending system and mold quick change system can bend materials accurately, really realize high precision, efficient bending collecting aluminium profiles, stainless steel coil, stainless steel strip material, galvanizer material and Chanalum materials by the one multi-functions super automatic bending machine. It is your first selection for making high grade LED sign, aluminium profile sign, stainless steel sign, punching sign and epoxy signs, etc.

设备优势/Advantage of the equipment

■折弯压力数据库/Bending stress database:

材料种类及厚度不同，折弯时的回弹也完全不同，切换材料时需要控制系统能够方便快捷的根据材料调整折弯压力。TPS在对多种材料进行深入研究的基础上，革命性的实现了新材料仅需调整一个压力参数，即可通过系统内置的算法，实现所有弧度压力参数的智能计算。用户在切换材料时，从数据库中选择对应的材料，使得随时切换材料而不再需要繁琐的调整过程，大幅降低了操作人员的门槛。

different material type and thickness make different springback when bending, it needs the control system adjusting bending pressure easily and quickly according to different materials. TPS software realized adjusting one pressure parameter for a new material to the computer interligently all arc pressure parameters through the system's built-in algorithm. Users can select the corresponding material from database when they want to change another material. In this way to switch material at any time without a cumbersome re-adjustable processing.

■激光损耗补偿/Laser loss compensation:

在实际激光切割中由于激光点半径的问题，切割后的面板与原文件有一定的偏差。TPS创新性的引入了激光损耗补偿方法，通过简单的一步测量，软件即自动计算激光损耗并进行补偿。从而用户彻底告别了反复修图以补偿激光损耗的问题，提高了操作过程的智能化程度。

Because of laser spot radius, size of cutted panel letter has a little deviation with letter in the original file. TPS company use laser loss compensation method innovatively to solve this problem. Our software can calculate laser loss and compensate automatically through a simple measure. It helps users get rid of modification and again for compensting laser loss to improve intelligence of operating.

■内置多种做字工艺/Software build-in many word process:

不同的做字工艺需要对自行文件进行相对应的缩放及材料损耗处理。本软件内置多种做字工艺，可实现同一文件制作不同类型的字壳，避免了各种复杂的配合计算，大幅提升了操作过程的易用性。

It usually needs to zoom original file correspondingly for different word process. But our software can make different font letter using the same file with built-in words process to operate easily and avoid the complex calculation.

■终身享有操作软件免费升级:

Operating software updates free lifetime.

■专业、高效、周到的全程服务。

Professional, high-efficient and considerate full service supporting.

软件支持 / Software support:

DXF/PLT文件输入，支持CAD、TYPE3、CRELDRAW、ILLUSTRATOR等。
DXF/PLT files input, support CAD, TYPE3, CRELDREW, ILLUSTRATOR, etc.

设备主要技术参数 / Technical Parameter:

电源 Power supply:	AC200V
整机功率 Power:	5.0KW
空气压缩 Compressed air:	0.4-0.6MPa
控制轴数量 Control axis quantity:	7轴 (7 axes)
最小折U形 Min. Bending radius:	不锈钢 (Stainless steel) R7mm, 铝型材 (aluminium profile) R20mm
最小内外角距离 Min. distance between interior angle and exterior angle:	不锈钢 (Stainless steel) 4mm, 铝型材 (aluminium profile) 15mm
开始折弯距离 Bending distance from start:	不锈钢 (Stainless steel) 4mm, 铝型材 (aluminium profile) 10mm
适用材料 Applied Material:	不锈钢、镀锌板、铝卷、铝型材 Stainless steel, galvanized sheet, aluminium coil, and aluminium profile
材料规格 Material thickness:	不锈钢 (Stainless steel) 0.6-1.0mm, 铝板 (aluminium) 1-2mm
加工高度 Processing height:	20-180mm
送料方式 Material feeding method:	交替式送料 (Alternate feeding)
伺服电机 Servo Motor:	4PCs
步进电机 Step motor:	3PCs
设备净重 N.W.:	900Kgs

